

# NEWS

*November 2016*

WEBSITE ADDRESS: [WWW.CRVC-EGA.ORG](http://WWW.CRVC-EGA.ORG)



## TIME SENSITIVE MATERIAL .....

We are planning to stitch this beautiful canvas design from Gay Ann Rogers entitled "**Midnight Star, a Geometric**", beginning Part I at the February 4<sup>th</sup> meeting and Part II at the Annual Meeting on April 1<sup>st</sup>. It is available for Groups of 8 or more, and the instructions are \$34.00 per person including postage. *If you would like to join the group, please send the [coupon](#) with your check to Linda Berry by December 3<sup>rd</sup>.*

**Midnight Star** was new at E-Week 2012, on 18 mesh blue canvas. What looks like white in the photograph is really silver Kreinik braid. When you see **Midnight Star** in person it sparkles from all the metallic braid.

The design looks intricate but it is easy to stitch. The patterns are fully graphed and repeat around the design. It stitches fairly quickly because of all the over stitchings and this makes it a great pattern for experimentation.

**Midnight Star** is 9 1/4" wide and long at its widest points on 18-mesh canvas 13" square.

The threads include Kreinik braid and ribbon and pearl cotton. The design is very shimmery from all the Kreinik braid. Stitches include a number of traditional needlepoint patterns and many many over stitchings to make the star shine.

The instructions booklet is 22 pages long plus a title page and 1 oversized graph.

---

## Chance to Display Your Wintery Best!

We have another outreach opportunity this December! We are scheduled for a display of winter and secular holiday themed framed pieces, ornaments, pillows, banners, accessories, or what have you at the Granby Public Library, 15 North Granby Road (Route 189), Granby, CT. Contact Kathryn Lord (860-653-0301, or [hglord@cox.net](mailto:hglord@cox.net)) to make arrangements to submit items during November. All items will be returned by early January. We will hold two stitch-ins at the Library, one on December 6<sup>th</sup> at 1 PM and a second on December 10<sup>th</sup> at 10 AM. Here are directions to the library:

The Granby Public Library (CT) is in the town complex at 15 North Granby Road just west of the town green where Routes 10, 20, and 189 converge, and is across Routes 20 & 189 from the cemetery. From I-91, take the Bradley Airport/Granby Route 20 exit onto the Route 20 Connector. The actual exit for Route 20 Granby is the last one before the airport, and it's about 5.5 miles straight west from there to the library. Coming from the Hartford area west of I-91, take Route 189, or make your way to Route 10. From north or south, take Route 10 and turn west at the intersection at the green.

++++++A reminder that we still are selling the books from the CRVC library (see lists here: <http://www.crvc-ega.org/library.html>). This is your last chance to get outstanding references for your home use. We will be ending the sale at the end of the year, and disposing of the remainder of the volumes at that time.

---

Saturday, December 3<sup>rd</sup>

Show & Tell and Luncheon @ Seabury

*"Escape from the Hustle and Bustle of the Holidays"*

We will meet at 11:30 a.m. at the main building. Our luncheon will be in the Bistro where each member will pay for her own lunch choices. However, please sign up as we need to know how many will be coming. Bring along whatever you'd like for **show and tell**, whether complete or incomplete.

A [coupon](#) is provided for you to indicate your intention to attend the luncheon.

Directions to **Seabury** are available at [www.seaburylife.org/directions](http://www.seaburylife.org/directions) or as described below:

**Seabury's Address:** 200 Seabury Drive, Bloomfield, CT 06002

**From Points North and Bradley International Airport:**

Take I-91 South to Exit 36, Bloomfield-Rte 178 West (Park Avenue). Turn right at end of exit ramp onto Rte 178 West. It is 2.6 miles to Seabury.

\*Continue to follow Rte 178 West. At the intersection of Rte 187 (Blue Hills Ave. First Cathedral is located at this intersection on left), continue straight. This is now Wintonbury Avenue. Landmarks are the Seabury At Home office on your right, and Bloomfield United Methodist Church on your left. At fork, bear right to stay on Wintonbury Avenue. Seabury is on the right.

\*Note: Take the **second** entrance, which is the Main Entrance. The first entrance will bring you to Seabury Meadows, our Memory Support Center.

**From Points South:**

Take I-91 North to Exit 36, Bloomfield Rte 178 West (Park Avenue). Turn left at end of exit ramp onto Rte 178 West and follow the directions above from asterisk (\*). Seabury is 2.6 miles from Exit 36.

**From Points East:**

Take Mass Pike (Rte 90) to Exit 9 Hartford New York City Sturbridge Rtes 84 & 20. After toll booths, bear left, following signs for Rte 84 West, Hartford, CT. Take Exit 61 onto Rte 291 West Windsor. Note: The exits in this area are out of sequence. Exits 62

& 60 Buckland St Middle Turnpike West will appear before Exit 61. Take Exit 2B Springfield I-91 North. From I-91 North, take Exit 36, Bloomfield Rte 178 West (Park Avenue). Turn left at end of exit ramp onto Rte 178 West and follow the directions above from asterisk (\*). Seabury is 2.6 miles from Exit 36.

Alternate Route From Points East: Take Mass Pike to Exit 6 Springfield/Chicopee Rte 91. Follow signs for I-91 South. Take Exit 36 off I-91 South Bloomfield/Rte 178 West (Park Avenue). Turn right at end of exit ramp onto Rte 178 West and follow the directions above from asterisk (\*).

**From Points West:**

Take Rte I-84 East to Rte 91-North and follow directions above for access from Points South. From Litchfield County, follow Rte 202 to Rte 44. Travel East on Rte 44 to Bishop's Corner in West Hartford, CT. Turn left onto North Main Street and follow directions below from the double asterisk (\*\*).

**Local Access to Seabury:**

Access South Main Street-West Hartford from Rte 84 or other local roads. Travel on South Main Street, heading North. This will take you through West Hartford Center and Bishop's Corner Shopping Plaza. Cross Rte 44 (Albany Avenue) at Bishop's Corner and continue straight. The road is now called North Main Street. \*\*Continue straight, cross the intersection of Rte 185 (Simsbury Road), past Cigna Insurance Corp, to the intersection of Rte 189 and Rte 218. Turn left onto Rte 189 North (Bloomfield Avenue) and travel to Bloomfield Center. In the center of Bloomfield, at the intersection of Rte 178 go straight on Rte 189 (Bloomfield Avenue) to the next stop light. Turn right onto Wintonbury Avenue. There will be a white Congregational Church at this turn. Stay on Wintonbury Avenue through 2 traffic lights until you reach your first stop sign. Turn right at the stop sign to stay on Wintonbury Avenue. Seabury is 3/4 of a mile on the left.

Remember to sign up for the Region Seminar next April 28-30<sup>th</sup>  
*Deadline for registration is December 1<sup>st</sup>*

Saturday, February 4<sup>th</sup>, 2017

Midnight Star Part I at Duncaster

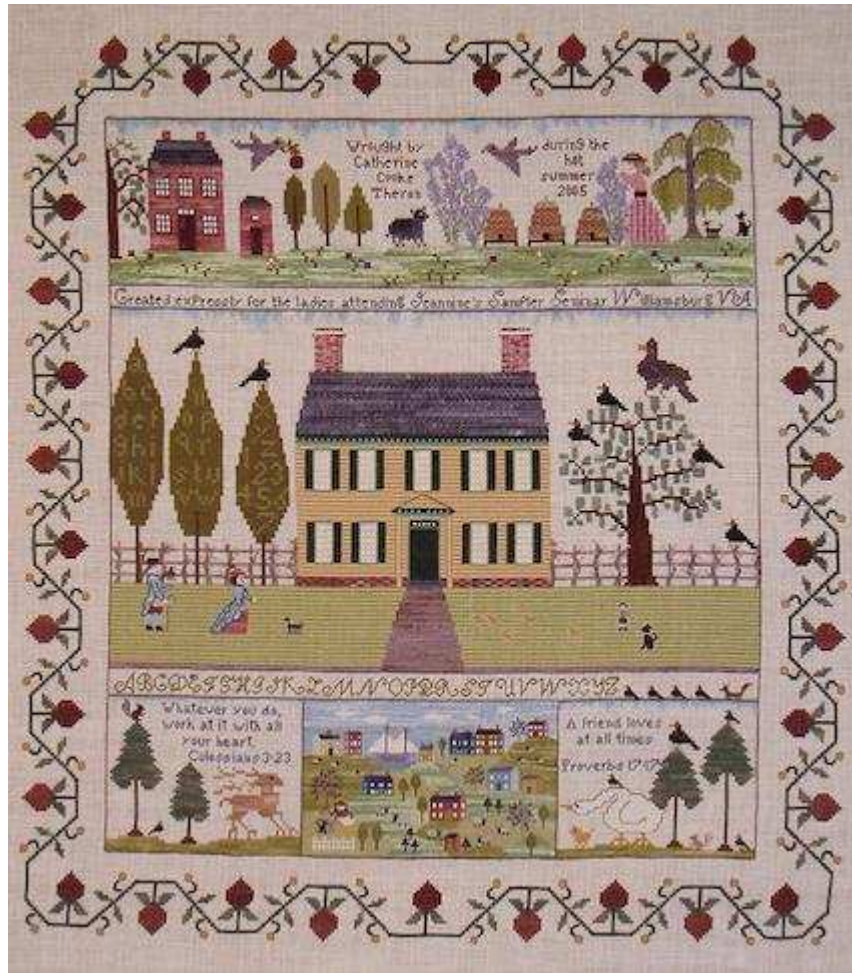
A [coupon](#) is provided for you to register -- due by December 3<sup>rd</sup>.

Saturday, April 1<sup>st</sup>, 2017

Midnight Star Part II at Duncaster

Saturday, June 17<sup>th</sup>, 2017

## “My Peaceable Kingdom” Sampler - Catherine Theron and Studio Time Opportunity



Worked on 30-count vanilla linen, this lovely, “peaceable” sampler will provide hours of pleasurable stitching. The top section features a lady in her garden complete with dogs, lilacs and bee skeps. The center has a colonial home reminiscent of the houses in Williamsburg, VA, “alphabet trees”, a family, pets and plenty of birds. The center bottom area has an over-1 village scene surrounded by the wild woods and various woodland creatures. The piece is outlined by a flowing strawberry border.

Stitches used include long arm cross, Smyrna cross, stem, diagonal satin, padded satin, petit point, colonial knot, straight, spiral trellis and several others.

A myriad of colorful silk and cotton threads are used to create this scene. All threads are included in your kit.

Finished size is 17 ½” x 19 ½”.

Location: **Duncaster Senior Residence** in Bloomfield, CT

Time: Class will take place from 9:30 to 4:30 pm

**Studio Time option:** If you don’t wish to take the class, you are very welcome to come and stitch on your own pieces in the hallway (there’s a bright natural light alcove near our meeting room) and join us for lunch. An opportunity for “me time” to work on your own projects!

A [coupon](#) is provided for you to register for this meeting.

**FUTURE BOARD MEETINGS (All members are welcome)**

Tues., Jan. 10 at [Thistle](#) Tues., Mar. 14 at [Seabury](#) Tues., May 9th Tues., Sept. 12th  
Tues., Nov. 14

**CRVC Program Registration Form -- Luncheon on December 3<sup>rd</sup> at Seabury**

Mail completed form to: Linda Berry, 343 Seabury Drive, Bloomfield, CT 06002.

**"Luncheon at Seabury"**

\_\_\_\_\_ I plan to attend this luncheon

**Name:** \_\_\_\_\_

**Address:** \_\_\_\_\_

**Email address:** \_\_\_\_\_

**Phone#:** \_\_\_\_\_

**CRVC Program Registration Form -- Midnight Star Part I on February 4<sup>th</sup> at Duncaster**

Mail completed form to: Linda Berry, 343 Seabury Drive, Bloomfield, CT 06002.

Make check payable to CRVC-EGA. The deadline for signing up is December 3, 2016.

**"Midnight Star Part I at Duncaster"**

\_\_\_\_\_ Kit fee (\$34) Due December 3<sup>rd</sup>

\_\_\_\_\_ Lunch (\$12)

**Name:** \_\_\_\_\_

**Address:** \_\_\_\_\_

**Email address:** \_\_\_\_\_

**Phone#:** \_\_\_\_\_

CRVC Program Registration Form -- Sampler with Catherine Theron on June 17<sup>th</sup> at Duncaster

Mail completed form to: Linda Berry, 343 Seabury Drive, Bloomfield, CT 06002.

Make check payable to CRVC-EGA. The deadline for signing up for this class is May 15, 2017.

Deposit of \$50 is due at registration. Payments may be in full or installments may be arranged.

"My Peaceable Kingdom with Catherine Theron"

\_\_\_\_\_ Kit fee (\$250) plus class fee (to be determined but approx. \$40-\$60)

\_\_\_\_\_ Studio Time (no fee)

\_\_\_\_\_ Lunch Saturday (\$12)

Name: \_\_\_\_\_

Address: \_\_\_\_\_

Email address: \_\_\_\_\_

Phone#: \_\_\_\_\_

CRVC-EGA Membership

\$57. Primary Membership

\$15. Plural Membership (NER)

\$18. Plural Membership (not NER)

For a membership card, please enclose a SASE.

Amt. Pd. \_\_\_\_\_

Check # \_\_\_\_\_

Date Pd. \_\_\_\_\_  
(keep as your receipt)

CRVC-EGA Membership and Address Change Form

The membership year runs from June 1 to May 31. If you are joining after September 1, please contact the membership chairman for prorated dues.

Mail your completed form to: Suzanne Newton, CRVC-EGA Membership, 14 Madison Lane, West Simsbury, CT 06092.

Make check payable to CRVC-EGA. Enclose SASE for membership card.

Address Change

CRVC Primary Membership (\$57)

Plural Membership, Primary Chapter in New England Region (\$15)

Plural Membership, Primary Chapter *not* in New England Region (\$18)

Name: \_\_\_\_\_

Address: \_\_\_\_\_

City, ST, ZIP \_\_\_\_\_

Phone: \_\_\_\_\_ Email: \_\_\_\_\_

Primary Chapter: \_\_\_\_\_

Membership No. \_\_\_\_\_ Total Enclosed \$ \_\_\_\_\_