

CONNECTICUT RIVER VALLEY CHAPTER

NEWS

January 2013

WEBSITE ADDRESS: WWW.CRVC-EGA.ORG

Saturday, February 9th

Julia Harvey will demonstrate the binding stitch during the first hour. We also request that you bring the Tree of Life piece, Carolyn's blackwork piece, any seminar pieces, group correspondence pieces or any uniquely finished projects. This will be an opportunity to collaborate with others on stitching and finishing projects. Also, this meeting will include the distribution of kits that have been ordered from Denise (see below) and the beginning of prework for the finishing class in June.

Supplies to bring:

#22 or #24 tapestry needle

Small embroidery scissors

For Denise's kit: #26 or #28 tapestry needles

Scroll frame (14" will work for all sizes) – some will be available in class

Magnification and lighting if desired

Basting thread to contrast with linen

Ruler

Please let us know if you are coming and register for lunch if you wish.

Location: **Duncaster Senior Residence** in Bloomfield, CT at **10 AM!**

Here are directions to Duncaster: (Official address is 40 Loeffler Road, Bloomfield, CT)
(follow signs to the Aquatic Center)

From Rt. 84 Westbound [from Manchester]:

*Take Rt. 291, exit 61. Follow Rt. 291 to Rt. 218 exit. Take left onto Rt. 218. Follow for about 3 miles. Take right onto Rt. 189 and follow to the center of Bloomfield. Take a left on Rt. 178. Continue straight on Rt. 178 for 1.4 miles. To use the new front entrance, turn right onto Mountain Avenue and continue approx. ½ mile to entrance on the left into Duncaster. From the Loeffler Road entrance or the Mountain Avenue entrance, once on the campus, **visitors should follow the signs to the Aquatics & Fitness Center Entrance.** Our meeting takes place in the conference room one floor above the entrance level (4th floor).*

From Rt. 84 Eastbound [from Farmington]:

*Take exit 41. Go left on South Main Street [which becomes North Main Street at West Hartford Center] for 4.6 miles to Rt. 185. Turn left on Rt. 185 for 1.8 miles. Turn right on Rt. 178. To use the new front entrance, after about ½ mile turn left onto Mountain Avenue and continue approx. ½ mile to entrance on the left into Duncaster. From the Loeffler Road entrance or the Mountain Avenue entrance, once on the campus, **visitors should follow the signs to the Aquatics & Fitness Center Entrance.** Our meeting takes place in the conference room one floor above the entrance level (4th floor).*

From Rt. 91 [North or South]:

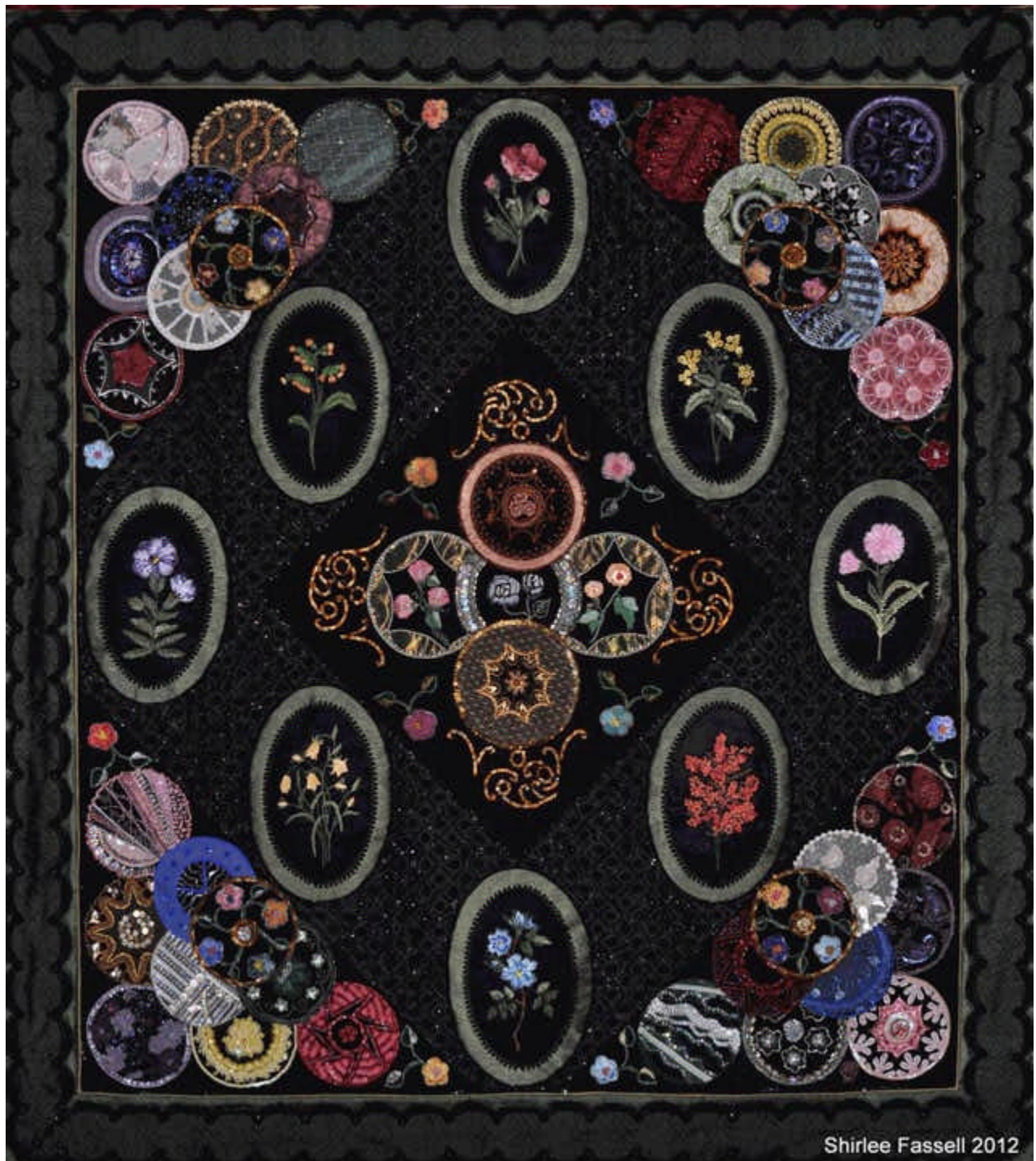
*Take exit 36. Go west on Rt. 178 for 4.5 miles to the center of Bloomfield. At the traffic light continue straight on Rt. 178 for 1.4 miles. To use new front entrance, turn right onto Mountain Avenue and continue approx. ½ mile to entrance on the left into Duncaster. From the Loeffler Road entrance or the Mountain Avenue entrance, once on the campus, **visitors should follow the signs to the Aquatics & Fitness Center Entrance.** Our meeting takes place in the conference room one floor above the entrance level (4th floor).*

Saturday, April 13th

We will be treated to a presentation by Shirlee Fassell, a CRVC member from Longmeadow, MA. The following is a description of what she will "show and tell":

"I have loved and studied many forms of embroidery my entire life. When I attended the Ecole Lesage, Paris France, I was literally HOOKED on the tambour technique or as the French refer to it the Lunéville hook. I incorporate the couture embroidery techniques I am learning in France along with my years of embroidery experience to create my own unique art quilts. My lecture will detail my journey."

After Shirlee's presentation, we will continue stitching the Quaker ball and answer any questions that may have arisen.



Shirlee Fassell 2012

Please let us know if you are coming and register for lunch if you wish.

Saturday, June 1st

Quaker Ball Finishing Class with Denise Pratt – A Foley/Cornelius Teacher

In class, time will be devoted to constructing the puzzle ball. Some time may also be devoted to constructing bonus pieces for those students that have opted to stitch those pieces as well.



Want to stitch something different and unique? Let's make a puzzle ball!

What is a puzzle ball? FUN! That's what it is. This particular ball uses octagons, hexagons, and squares. It is based on one of the Archimedean solids. What is that?! It's a polyhedron of course, which is a geometric shape with flat sides. It's a geometry thing. But you don't need to know geometry to make this fabulous ball, because when you make the shapes out of fabric, sew them together, and stuff it, a ball is created instead of a polyhedron.

The stitches used on The Quaker Ball are cross stitch, running stitch, chain stitch, and lacing the chain.

Kits will be available several months prior to class. Students will stitch the individual components in the intervening months before class.

Kit cost: There are several options for this piece.

- **Option A:** Booklet only – Student supplies all materials – \$28.00
- **Option B:** Small Ball Kit – 40 count Newcastle linen in flax, and Waterlilies Chili – \$62.00 (includes instruction booklet)

• **Option C:** Medium Ball Kit – 32 count Wichelt Natural Brown linen and a plethora of Weeks Dye Works floss – \$78.00 (includes instruction booklet)

• **Option D:** Large Ball Kit – 28 count Cashel Linen in flax, dark olive, and navy with three colors of Waterlilies silk thread – \$91.00 (includes instruction booklet)

Pre-work: Yes. Ball Components must be stitched in advance. Approximately 50 hours of stitching

Students need to bring to class: Scissors, magnification and lighting if desired

IMPORTANT: Students will supply the usual stitching supplies and cotton stuffing. Cotton stuffing can be purchased at quilt shops. It works better than polyester fiberfill. Polyester fiberfill makes the ball more lumpy. The cotton stuffing alleviates this problem.

Bonus Accessory Pieces Kit

A kit for the bonus accessories is also available. Finishing of these pieces can be included in class as time allows. **Pictures of these pieces are on our website.**

Friday, Saturday & Sunday, October 25th, 26th and 27th

"Quiet Moments" – Jeanette Rees (A Foley/Cornelius Teacher)

Mark your calendar now to reserve these three days! Jeanette is very innovative with her techniques and has taught at EGA National Seminars. Although this picture does not show the piece in all of its glory, you may check her website to see it more clearly. There is a wonderful cardinal in the crotch of the tree and a sweet little rabbit on the left side.



Proficiency Level: Intermediate
Design Size: 7" x 9"
Ground: 24-count Congress Cloth, white
Class Description: Picture the still quiet of winter as the snow settles, with only a little bunny and cardinal in view. This is the scene that you will detail as part of the dimensional canvas work "Quiet Moments" class.

The class begins with color washing the canvas, on which the students will then do both surface and traditional stitching. Students will learn a variety of different techniques as they stitch the large tree on a separate piece of canvas, then pad and appliqué it to the main forest piece. Dimension is enhanced by the use of padded Batik fabric embellished with metallic and cotton cording. Various geometric stitches and French knots enhance the snow mounds.

Creativity is encouraged, as students add their own touches to this stitched forest with a variety of rayon threads, cotton flosses, and metallic threads. Color wash paints and brushes will be available for use in class to further enhance the piece.

This class will give the stitcher all the needed elements to complete the piece at home.

Technique: Traditional, Surface, Dimensional Embroidery
Kit Fee: \$80
Pre-stitching: None
Student to Supply: 11"x13" stretcher bars, laying tool, and usual stitching supplies.

Saturday & Sunday, January 31th & February 1st, 2014

"Winter" – Lynn Payette (A Foley/Cornelius Teacher)

This is the piece that we all admired at the December class with Lynn. Pictures and more information will follow in the next newsletter.



NER SEMINAR 2013 - APRIL 5-7

Plans are in the works for an extensive 'Shop Hop'. We are suggesting that you 'Shop' your way to Seminar and stop in a variety of Needlework related shops. Details and passes, along with directions, will be included when you receive your seminar confirmation.

An Exhibit is being planned and each Chapter is being asked to showcase class or GCC projects completed within the past two years. This is your chance to share your work with other EGA members and help other Chapters who may be 'challenged' with ideas for programs.

The Hartford/Windsor Marriott in Windsor, CT, is the venue for our Seminar. Please register now as all classes still have openings. **The deadline for registration is February 15th**, so make sure you will be with us to enjoy all of the fun!

PLEASE NOTE:

We are looking for finished pieces for our CRVC exhibit table at the Seminar. If you would like to display your finished pieces for the following classes, please let Lisa know (klisagreen@yahoo.com):

"A Field in Tuscany" - Lynn Payette

"Polar Shadows" - Caela Conn Tyler

"Say It With Flowers" - Marnie Ritter

"Tree of Life" - Lynn Payette

"Ancestry" - Carolyn Standing Webb

Any pieces from Region Day '12 or Seminar '11 in Portland, ME

PLEASE NOTE, AGAIN:

At Seminar, in order to enhance the Foley/Cornelius fund, CRVC will sell items for donations. If you have anything you would like to contribute, please get in touch with Lisa (klisagreen@yahoo.com).

FUTURE BOARD MEETINGS (All members are welcome)

Location: Thistle Needleworks at 10 a.m.

Tues., **Mar. 5th**

Tues., **May 7th**

Tues., **Sept. 10th**

Tues., **Nov. 5th**

Pequot Colony – Anyone who is interested can call Doris Boas at: (860) 572-8441 or Stephanie Thorp at: (860) 536-0912.

CRVC Program Registration Form

Mail completed form to: Linda Berry, 343 Seabury Drive, Bloomfield, CT 06002. Make check payable to **CRVC-EGA**.

Check those that apply:

_____ Lunch Saturday (February 9th) (\$12)

_____ I plan to attend on 2/9

_____ Lunch Saturday (April 13th) (\$12)

_____ I plan to attend on 4/13

_____ Lunch Saturday (June 1st) (\$12)

_____ I plan to attend on 6/1

_____ Total

Name: _____

Phone: _____ Email: _____

CRVC-EGA Membership

\$55. Primary Membership
\$15. Plural Membership (NER)
\$18. Plural Membership (not NER)

For a membership card, please enclose a SASE.

Amt. Pd. _____

Check # _____

Date Pd. _____
(keep as your receipt)

CRVC-EGA Membership and Address Change Form

The membership year runs from June 1 to May 31. If you are joining after September 1, please contact the membership chairman for prorated dues.

Mail your completed form to: Suzanne Newton, CRVC-EGA Membership, 14 Madison Lane, West Simsbury, CT 06092.

Make check payable to **CRVC-EGA**. Enclose SASE for membership card.

- Address Change
- CRVC Primary Membership (\$55)
- Plural Membership, Primary Chapter in New England Region (\$15)
- Plural Membership, Primary Chapter *not* in New England Region (\$18)

Name: _____

Address: _____

City, ST, ZIP _____

Phone: _____ Email: _____

Primary Chapter: _____

Membership No. _____ Total Enclosed \$ _____